

## PLANAR SCHOTTKY BARRIER DIODE

### PINNING

PIN	DESCRIPTION
1	Cathode
2	Anode

### FEATURES

- Small surface mounting type
- Low reverse current and low forward voltage
- High reliability



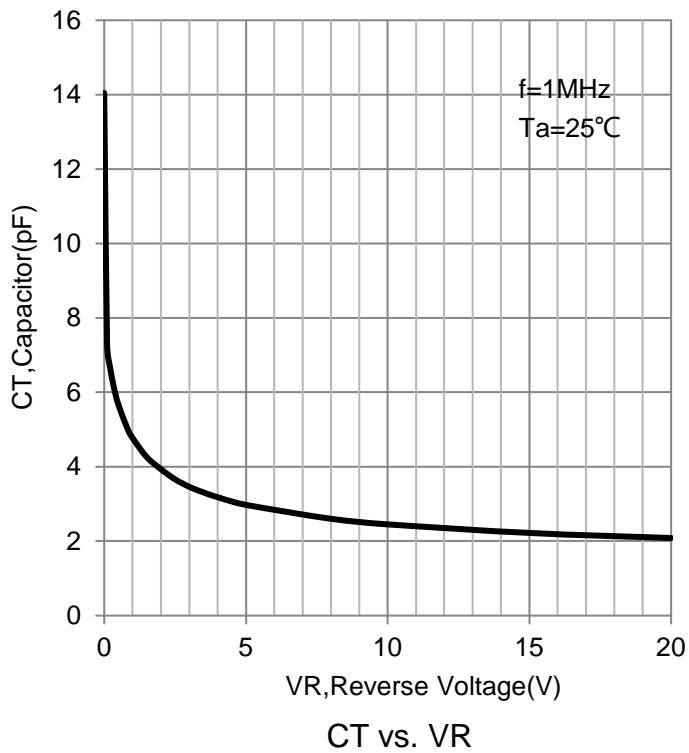
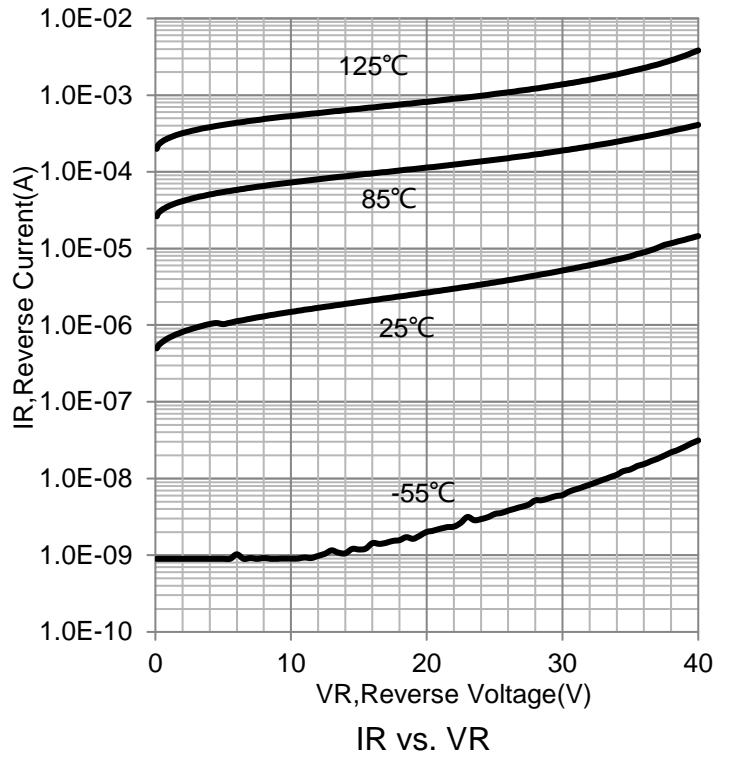
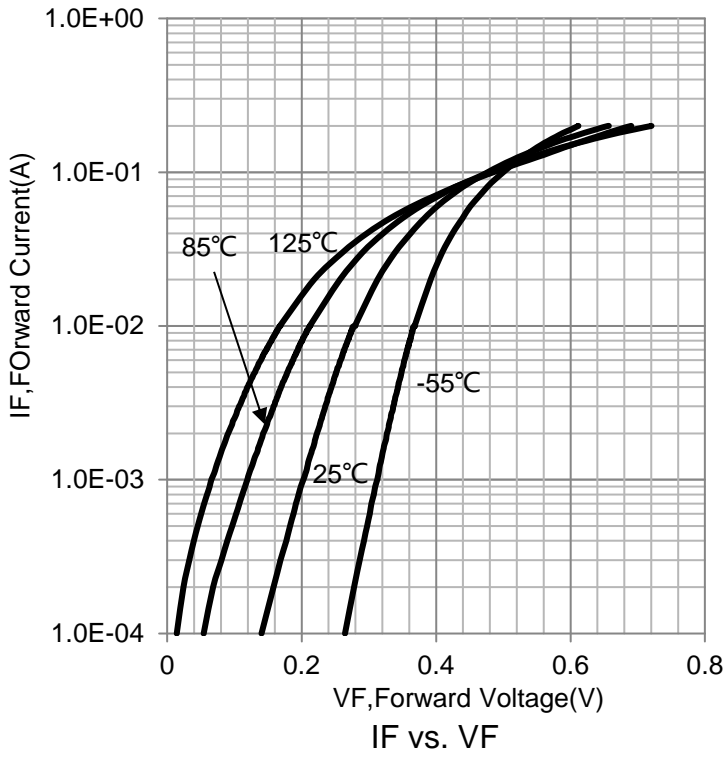
### ■ Maximum Ratings and Electrical Characteristics, Single Diode @Ta=25°C

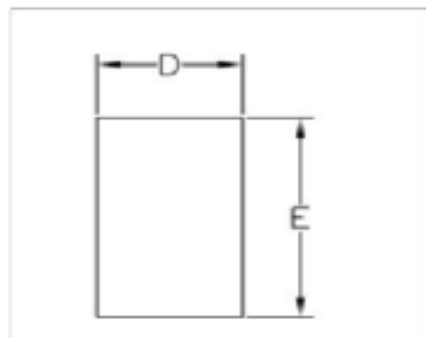
Parameter	Symbol	Limit	Unit
DC reverse voltage	$V_R$	30	V
Mean rectifying current	$I_O$	100	mA
Non-repetitive Peak forward surge current @ t=8.3ms	$I_{FSM}$	500	mA
Power dissipation	$P_D$	200	mW
Thermal Resistance Junction to Ambient	$R_{\theta JA}$	500	°C/W
Operating Junction Temperature Range	$T_j$	-40 ~ +125	°C
Storage Temperature Range	$T_{stg}$	-55 ~ +150	°C

### ■ Electrical Ratings @Ta=25°C

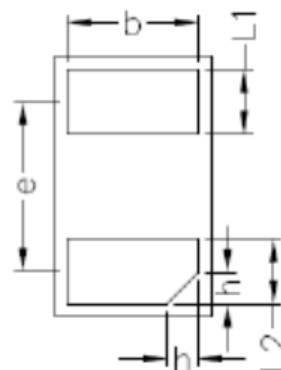
Parameter	Symbol	Test Condition	Min	Typ	Max	Unit
Reverse breakdown voltage	$V_{(BR)}$	$I_R=10\mu A$	30			V
Reverse current	$I_R$	$V_R=10V$			2	$\mu A$
Forward voltage	$V_F$	$I_F=10mA$			0.40	V
		$I_F=20mA$			0.45	V
		$I_F=100mA$			0.60	V
		$I_F=200mA$			0.70	V

## Typical Characteristics

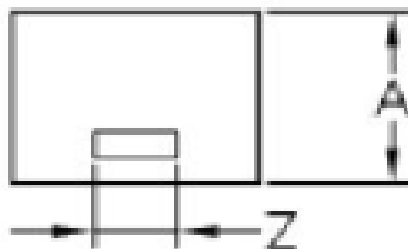


**DFN1006-2L Package Outline Dimensions**


TOP VIEW



BOTTOM VIEW



SIDE VIEW

Symbol	Dimensions In Millimeters		
	Min	Nom	Max
D	0.55	0.60	0.65
E	0.95	1.00	1.05
L1	0.20	0.25	0.30
L2	0.20	0.25	0.30
A	0.45	0.50	0.55
Z	0.15	0.20	0.25
b	0.45	0.50	0.55
e	0.64BSC		
h	0.07	0.12	0.17